



**RPD004Hu01 100µg**

**Recombinant Isoleucyl tRNA Synthetase (IARS)**

**Organism Species: *Homo sapiens* (Human)**

***Instruction manual***

FOR RESEARCH USE ONLY

NOT FOR USE IN CLINICAL DIAGNOSTIC PROCEDURES

---

13th Edition (Revised in Aug, 2023)

**Gentaur Molecular Products BVBA**

**Address:** Voortstraat 49, 1910 Kampenhout, Belgium

**T:** 0032 16 58 90 45 | **E:** [info@gentaur.com](mailto:info@gentaur.com)

**Websites:** [www.gentaur.com](http://www.gentaur.com) | [www.maxanim.com](http://www.maxanim.com)

## [ **PROPERTIES** ]

**Source:** Prokaryotic expression

**Host:** *E.coli*

**Residues:** Met1~Arg500

**Tags:** N-terminal His Tag

**Subcellular Location:** Cytoplasm

**Purity:** > 97%

**Traits:** Freeze-dried powder

**Buffer formulation:** 20mM Tris, 150mM NaCl, pH8.0, containing 0.01% skl, 5%Trehalose.

**Original Concentration:** 250µg/mL

**Applications:** Positive Control; Immunogen; SDS-PAGE; WB.

(May be suitable for use in other assays to be determined by the end user.)

**Predicted isoelectric point:** 5.6

**Predicted Molecular Mass:** 61.7KDa

**Accurate Molecular Mass:** 62kDa as determined by SDS-PAGE reducing conditions.

## [ **USAGE** ]

Reconstitute in 20mM Tris, 150mM NaCl (pH8.0) to a concentration of 0.1-1.0 mg/mL. Do not vortex.

## [ **STORAGE AND STABILITY** ]

**Storage:** Avoid repeated freeze/thaw cycles.

Store at 2-8°C for one month.

Aliquot and store at -80°C for 12 months.

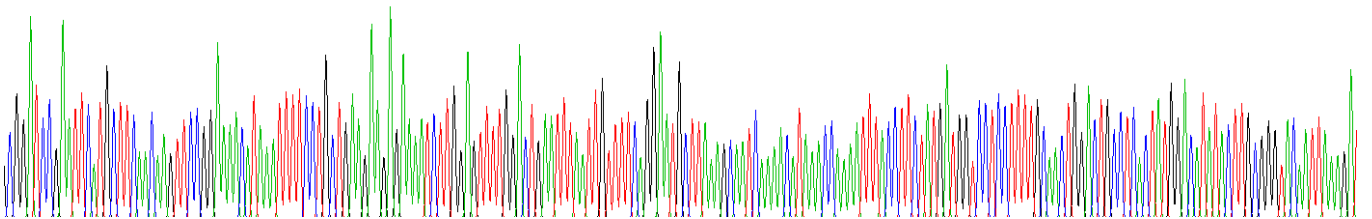
**Stability Test:** The thermal stability is described by the loss rate. The loss rate was determined by accelerated thermal degradation test, that is, incubate the protein at 37°C for 48h, and no obvious degradation and precipitation were observed. The loss rate is less than 5% within the expiration date under appropriate storage condition.

## [ **SEQUENCE** ]

MLQQVPENIN FPAEEKILE FWTEFNCFQE CLKQSKHKPK FTFYDGPFFA  
 TGLPHYGHIL AGTIKDIVTR YAHQSGFHVD RRFQWDCHGL PVEYEIDKTL  
 GIRGPEDVAK MGITEYNNQC RAIMRYSAE WKSTVSRLGR WIDFDNDYKT  
 LYPQFMESVW WVFKQLYDKG LVYRGVKVMP FSTACNTPLS NFESHQNYKD  
 VQDPSVFVTF PLEEDETVSL VAWTTTPWTL PSNLAVCVNP EMQYVKIKDV  
 ARGRLILME ARLSALYKLE SDYEILERFP GAYLKGKKYR PLFDYFLKCK  
 ENGAFTVLVD NYVKEEETG VVHQAPYFGA EDYRVCMDFN IIRKDSL PVC  
 PVDASGCF TT ETVDFAGQYV KDADKSIIRT LKEQGRLVA TTFTHSYPC  
 WRSDTPLIYK AVPSWFVRVE NMVDQLLRNN DLCYWVPELV REKRFGNWLK  
 DARDWTISR N RYWGTPILW VSDDFEVVC IGSVAELEEL SGAKISDLHR

**[ IDENTIFICATION ]**

@GGATCCGAATTCATGCTTCGACAAAGTTCCGGAAACATAAATTTTCTGCTGAGGAGAGAAATCTTGGAGTTTGGCTGAAATTAATTGTTTTTCAGGAACTCTTAAAGCAATCAAAACATAAAACAAAATTTTACCTTCTATGATGGTCTCTCTTTTGCAACTGGACTGCTGCTACTATGGACATATACTTGGGGTCAATTAAGAT



**Figure . Gene Sequencing (extract)**

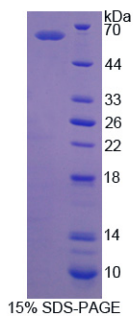


Figure. SDS-PAGE

**[ IMPORTANT NOTE ]**

The kit is designed for research use only, we will not be responsible for any issue if the kit was used in clinical diagnostic or any other procedures.